



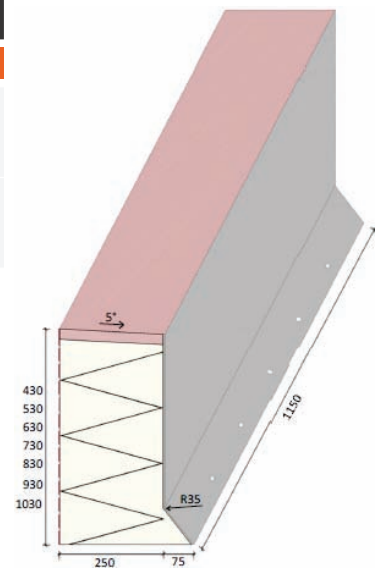
Finished element straight or with 45° miter cut

- simple, quick installation: prefabricated elements are glued
- reduced workload
- low logistical requirements
- first-class insulation without additional insulation
- Miter cut is included
- Your logo imprint is possible

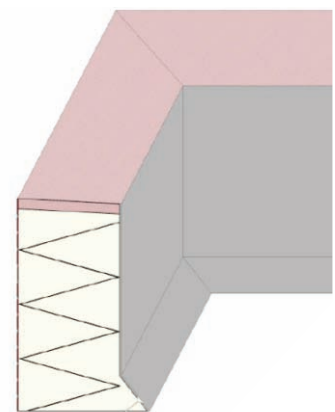
Building material, designation	Height (cm)	Heights (inside dimension) cm	Thickness bottom/top (cm)	Weight (kg)	Delivery / storage
Regulating element straight or with 45° miter cut					
ISOattika WD25	115	30 40 50 60 70 80 90 100	25 / 32,5	16 – 22	Euro pallet wrapped in foil 6 pcs/pallet = 6.9 running meters or 2 pcs/pallet = 2.3 running meters
ISOattika WD20	115	30 40 50 60 70 80 90 100	20 / 27,5	16 – 22	Euro pallet wrapped in foil 6 pcs/pallet = 6.9 running meters or 2 pcs/pallet = 2.3 running meters

Material

Core	EPS
EPS marking	13163-L3W 3-T2-S5-P 10-DS(N)5-8S250-CS(10 } 200
EPS compressive	>200kPa
EPS thermal conductivity	0.033W/mK
Coating outside	Spray plaster GK 1.5mm
Coating inside	Bitumen film or equivalent
Finish	Fiber concrete C25/30, d=3cm
Finish slope	5°
Finish adhesive tensile strength	5°
Concrete screws	Ø 7.5mm, Climadur coated



Control element WD25 straight



Control element WD20 straight

SUSTAINABILITY

ISOattika does not contain any organic materials such as wood or chipboard, which is why even unintentional moisture cannot cause any immediate damage. The EPS core is completely sheathed. Protection against the effects of the sun is therefore also provided for longer construction periods.

Processing

Processing temperature	+5°C to +30°C
Offsetting/fixing	full-surface in cement mortar, adhesive, or PU foam, additionally 3 concrete screws
Joint surfaces	Adhesive or PU foam
Corner design	45° miter element
Length compensation	Element cut at the construction site

Note: Subject to change without notice due to technical progress.

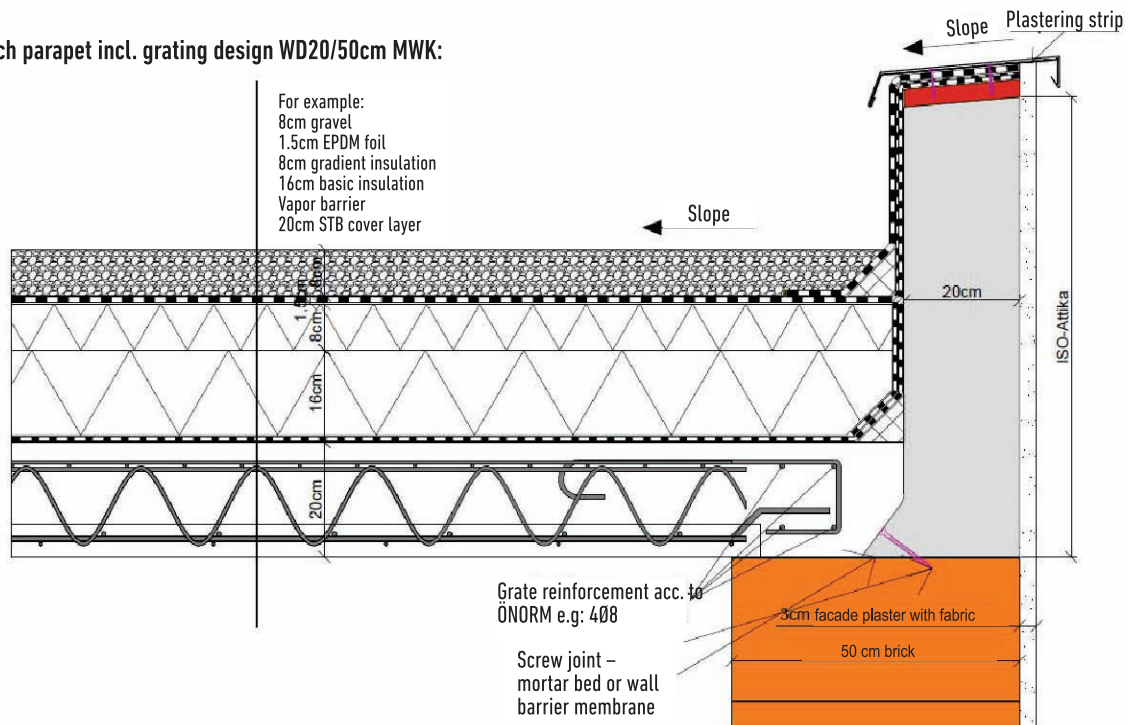
Version: 01-12/23

Office **Pragersko**
Ptujška cesta 37, 2331 Pragersko
T: +386 2 803 92 14
M: +386 41 447 073

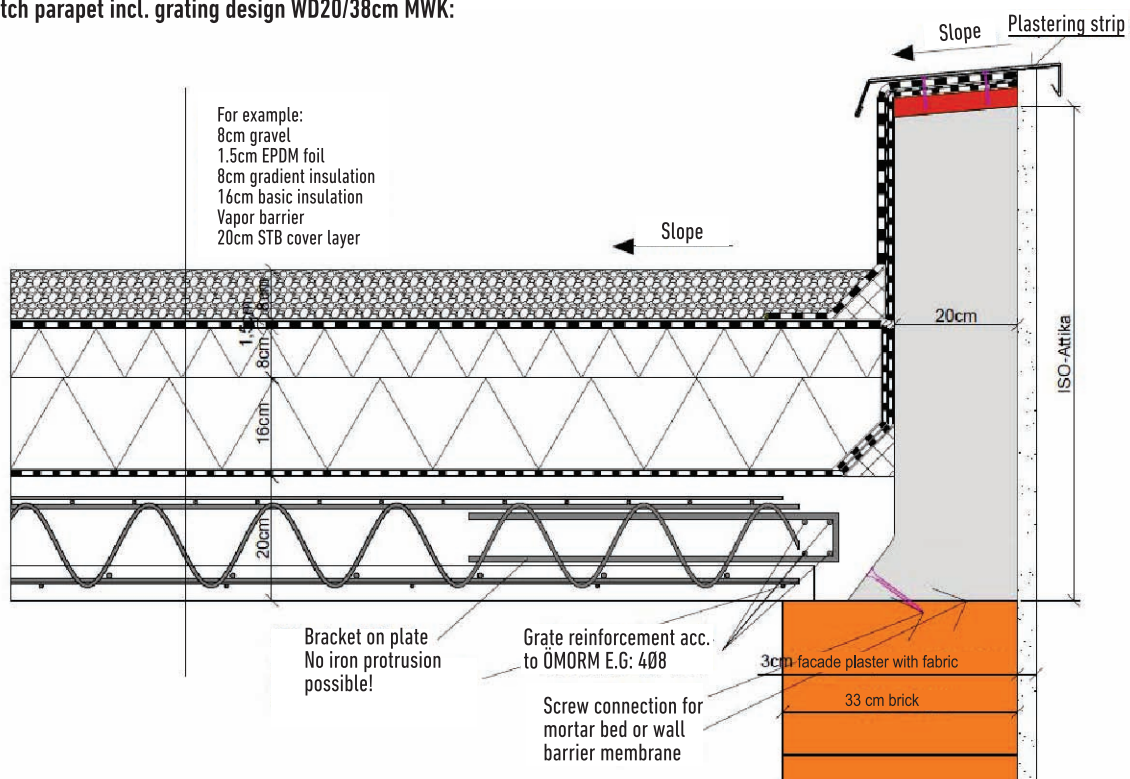
Office **Lenart**
Industrijska ulica 70, 2230 Lenart
T: +386 2 522 32 00
M: +386 41 447 073

E: info@preklade.si
www.preklade.si

System sketch parapet incl. grating design WD20/50cm MWK:



System sketch parapet incl. grating design WD20/38cm MWK:



Note: Subject to change without notice due to technical progress.

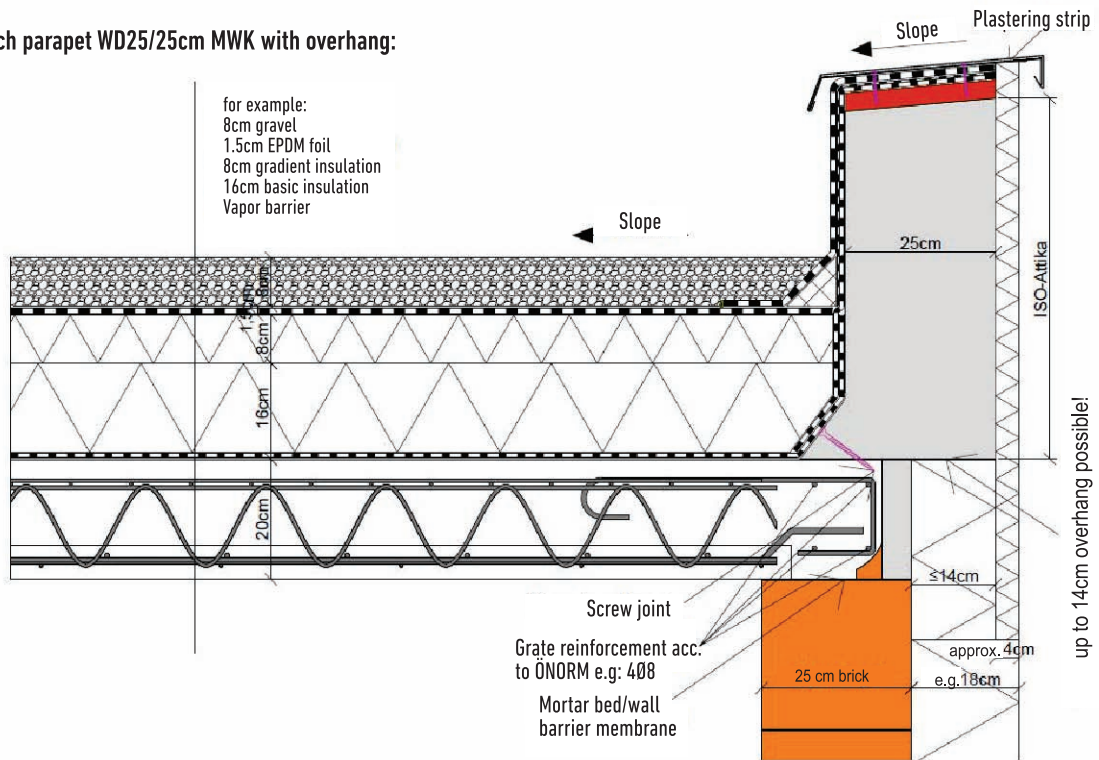
Version: 01-12/23

Office Pragersko
 Ptujška cesta 37, 2331 Pragersko
 T: +386 2 803 92 14
 M: +386 41 447 073

Office Lenart
 Industrijska ulica 70, 2230 Lenart
 T: +386 2 522 32 00
 M: +386 41 447 073

E: info@preklade.si
 www.preklade.si

System sketch parapet WD25/25cm MWK with overhang:



Note: Subject to change without notice due to technical progress.

Version: 01-12/23

Office **Pragersko**
 Ptujška cesta 37, 2331 Pragersko
 T: +386 2 803 92 14
 M: +386 41 447 073

Office **Lenart**
 Industrijska ulica 70, 2230 Lenart
 T: +386 2 522 32 00
 M: +386 41 447 073

E: info@preklade.si
www.preklade.si